

**Protocols and Contacts for  
Emergency Wildfire GIS Support  
between the  
BC Provincial Emergency Program  
and the  
Integrated Land Management Bureau**

**May 2007**



## Table of Contents

Background.....	3
Requests for ILMB Mapping Support .....	3
Requests for 'Stand-by' GIS Support .....	4
Wildfire FTP Site .....	4
Wildfire Support Web Site.....	6
Appendix 1 – ILMB Contacts .....	7
Appendix 2 – PEP Contacts.....	8
Appendix 3 – Directions to Access FTP Site.....	9
Appendix 4 – Enabling Folder Views for FTP Access .....	10

# **Protocols and Contacts for Emergency Wildfire GIS Support between the Provincial Emergency Program and the Integrated Land Management Bureau**

**Eric Valdal**  
**ILMB Wildfire Preparedness Project Manager**

## **Background**

The Integrated Land Management Bureau (ILMB) is the lead agency for providing emergency incident GIS mapping support for the BC Provincial Emergency Program (PEP). Since the 2003 Firestorm in British Columbia, the ILMB has worked closely with PEP and other emergency response agencies to ensure effective wildfire incident GIS mapping support. Initiatives to improve on inter-agency preparedness, communication, incident data transfer, staff training and endeavours limiting risk characterize the trans-agency contingency planning. Preparedness activities are aligned with contemporary business needs as well as the recommendations that stemmed from the MSRM 2003 Fire Season Report<sup>1</sup> and the Filmon Report (2003)<sup>2</sup>.

This document outlines the ILMB mapping contacts, protocols, procedures and information services specific to wildfire emergency response support for PEP.

## **Requests for ILMB Mapping Support**

Through a service level agreement (SLA), the ILMB provides GIS service to PEP for preparedness planning and operational response. Mapping support may be resourced with ILMB GIS staff that are PEP TEAMS members<sup>3</sup>, internal ILMB GIS staff or a pre-qualified GIS contractor.

---

<sup>1</sup> LIBC 2003 Fire Season Report and Recommendations by the MSRM Fire Report Working Group

<sup>2</sup> Firestorm 2003 Provincial Review by the Honourable Gary Filmon, P.C., O.M.

<sup>3</sup> Carol Ogborne and Aaron McMillan, ILMB Victoria  
Steve Kachanoski, ILMB Kamloops  
Joshua Chan, ILMB Surrey

ILMB TEAMS members will be deployed to incidents according to PEP protocols and procedures<sup>4</sup>.

Over and above these resources, emergency incident GIS assistance can be requested from the ILMB through the regional contacts listed in Appendix 1.

Regional PEP contacts are listed in Appendix 2.

## Requests for ‘Stand-by’ GIS Support

Requests for stand-by or overtime service can be made through a regional ILMB GIS Services Manager. Requests for weekend stand-by or overtime GIS support should be made before 4 pm Friday.

The ILMB GIS Services Managers are listed in Appendix 1.

## Wildfire FTP Site

Agency members of the Interface Wildfire Work Group (PEP, MOFRP<sup>5</sup>, the OFC<sup>6</sup> and the ILMB) agreed to exchange incident related operational spatial information and maps in a provincially coordinated and standardized manner. To meet this purpose, a wildfire incident FTP site has been created and is managed by the ILMB. The Wildfire FTP site can be accessed at:

<ftp://fire.env.gov.bc.ca>

**NOTE: This ftp site is for the exchange of maps and spatial data generated during an emergency incident. It does not contain base data for emergency mapping.**

---

<sup>4</sup> This may include deployment through Regional PREOC operational response protocols or possibly dispatched through the Provincial Emergency Coordination Centre (PECC).

<sup>5</sup> BC Ministry of Forests and Range, Protection Branch

<sup>6</sup> BC Office of the Fire Commissioner

**Directions** for accessing this site can be found in Appendix 3. The site is password protected. If you require assistance to access files on this FTP site or lose the password, please contact Per Wallenius or a Regional Contact listed in Appendix 1.

- Usernames and Passwords for the FTP Site can be retrieved from Per Wallenius (Appendix 1).

**This site is maintained from 8:30 am to 4:30 pm Monday to Friday.** After hours support can be arranged. Please call the PEP Mapping Support Coordinator or the Wildfire Mapping Support Coordinator listed in Appendix 1 during the business hours listed above to arrange after hours or weekend service.

This site has folders that are organized by MOFRP Fire Centre that cover geographic regions of British Columbia. Links to maps of these regions are located on our wildfire mapping and information support page under the heading “**Fire Centre Locations.**” The hyperlink to the web site is listed in the following section.

Within each fire centre folder on the wildfire FTP site (e.g. “coastal”) is a “**remote\_sensing**” folder. This folder is password protected and intended for secure MOFRP proprietary data transfer. There are few situations where this folder will be used by the MOFRP. Any information required for transfer to PEP or other emergency support agency will not be stored in the remote\_sensing folder by the MOFRP.

**Standards** for posting data and maps on the wildfire FTP site can be found on the web site listed in the next section.

ILMB staff are not responsible for policing data or map naming standards on the FTP site. If assistance in dispute resolution is required, please contact either the PEP Mapping Support Coordinator the Wildfire Mapping Support Coordinator or the FTP Administrator listed in Appendix 1.

## **Wildfire Support Web Site**

A web site has been created to provide ILMB's wildfire mapping support information for the emergency response agencies. The site can be accessed at:

[http://ilmbwww.gov.bc.ca/cis/initiatives/emerg\\_support/index.html](http://ilmbwww.gov.bc.ca/cis/initiatives/emerg_support/index.html)

## **Role of ILMB Mapping Support Coordinators**

ILMB has designated two coordinator positions, listed in Appendix 1. These roles are provincial in scope and intended to:

- Provincially coordinate requests for emergency mapping and information support should they be necessary
- Resolve emergent mapping and information support issues that require trans-region solutions.

Please do not hesitate to call either of the coordinators with emergency mapping or information support dilemmas.

## Appendix 1 – ILMB Contacts

	<b>ILMB Contact</b>	<b>Service Location</b>	<b>Work Phone</b>	<b>Cell Phone</b>
<b>Wildfire Mapping Support Coordinator</b>	Per Wallenius	Provincial	250 356-0246	250 354-8124
<b>PEP Mapping Support Coordinator</b>	Carol Ogborne	Provincial	250 356-6998	250 882-9496
<b>ILMB Management Lead for Emergency Response</b>	Larry Price, Director (Client Services)	Provincial	250 371-5212	250 318-8605
<b>PEP Region</b>	<b>ILMB Contact</b>	<b>Service Location</b>	<b>Work Phone</b>	<b>Cell Phone</b>
<b>CRL PREOC</b>	Sasha Lees	Kamloops	250 377-4485	250 320-5202
<b>NEA PREOC</b>	Jeremy Burbee	Prince George	250 565-4384	250 612-9664
<b>NWE PREOC</b>	Loretta Malkow	Smithers	250 847-7471	250 876-8676
<b>SEA PREOC</b>	Dana Diotte	Nelson	250 354-6850	250 551-0550
<b>SWE PREOC</b>	Josh Chan	Surrey	604 586-4445	778 840-5858
<b>VIR PREOC/PEP HQ</b>	Carol Ogborne	Victoria	250 356-6998	250 213-6675
<b>PEP Region</b>	<b>ILMB Management Contact</b>	<b>Service Location</b>	<b>Work Phone</b>	<b>Cell Phone</b>
<b>CTL PREOC</b>	Laing Shimmin	Kamloops	250 371-5209	250 319-1662
<b>NEA PREOC</b>	Corey Smeele	Prince George	250 565-4461	250 613-9650
<b>NWE PREOC</b>	Corey Smeele	Prince George	250 565-4461	250 613-9650
<b>SEA PREOC</b>	Laing Shimmin	Kamloops	250 371-5209	250 319-1662
<b>SWE PREOC</b>	Gurdeep Singh	Surrey	604 586-4283	604 790-7210
<b>VIR PREOC/PECC</b>	Dugald Smith	Victoria	250 356-5260	250 888-2249

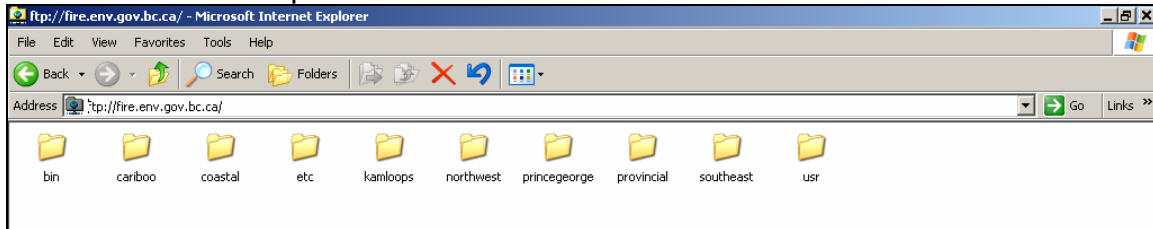
## Appendix 2 – PEP Contacts

<b>PEP Region</b>	<b>PEP Contact</b>	<b>Location</b>	<b>Contact Info</b>
<b>Senior Regional Manager CTL/SEA</b>	Ginny Garner	Kamloops	250 371-5240
<b>CTL PREOC</b>	Peter Prendergast	Kamloops	250 371-5240
<b>SEA PREOC</b>	Alan Bond	Nelson	250 354-5904
<b>A/Senior Regional Manager NEA/NWE</b>	Bob Kelly	Prince George	250 612-4172
<b>A/NEA PREOC</b>	Michael Higgins	Prince George	250 612-4172
<b>NWE PREOC</b>	Maurie Hurst	Terrace	250 615-4800
<b>Senior Regional Manager SWE</b>	John Oakley	Surrey	604 586-4390
<b>SWE PREOC</b>	Ian Cunnings, Bob Stubbings, Mike Andrews	Surrey	604 586-4390
<b>Senior Regional Manager VIR &amp; VIR PREOC</b>	Jim Price	Victoria	250 952-4918
<b>Director of Operations Victoria</b>	Jim Whyte	Victoria	1 800 663-3456
<b>PECC</b>	PECC Director	Victoria	250 952-5818 or 1-800-663-3456
<b>PECC</b>	PECC Planning Section Chief	Victoria	250 952-5530

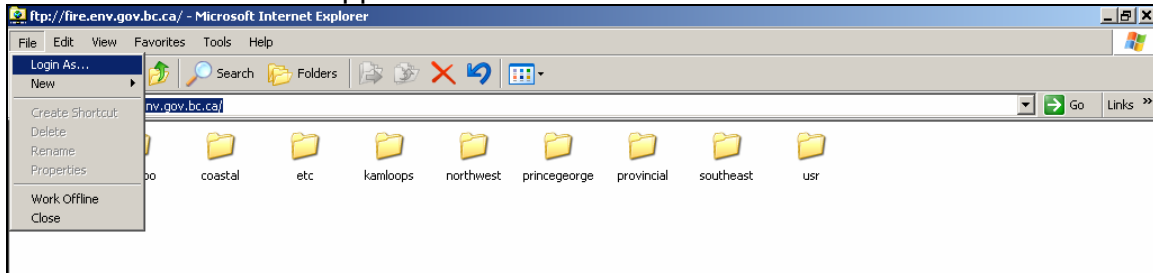
## Appendix 3 – Directions to Access FTP Site

### Directions for Accessing the Wildfire FTP Site

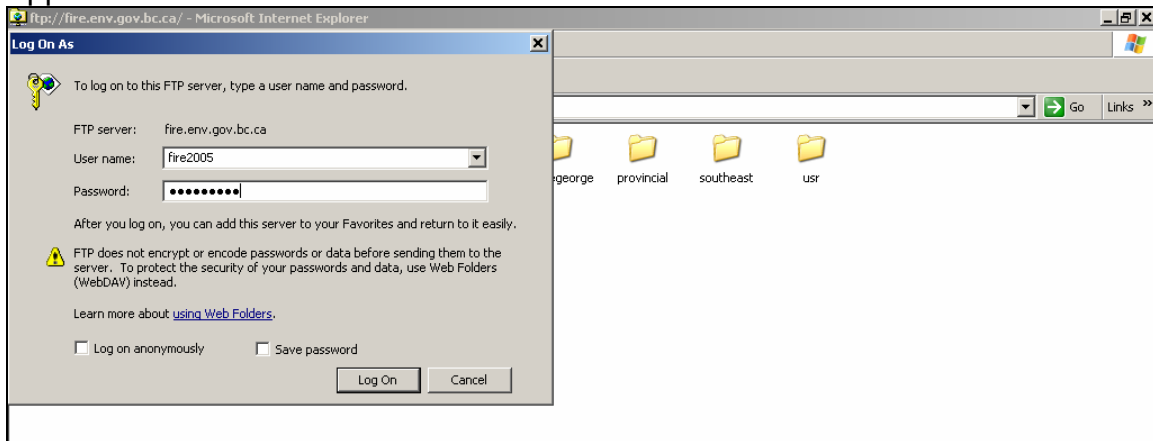
Use the hyperlink <ftp://fire.env.gov.bc.ca> or type this information into the address bar of an internet explorer. You should see the folders listed below.



Log on to the wildfire ftp site. From the 'File' pull down menu select 'Login As ...'. If you do not see the 'Login As...' option, you must enable 'FTP folder view' for FTP sites as shown in Appendix 4. For assistance, contact the Wildfire FTP Administrator listed in Appendix 1.



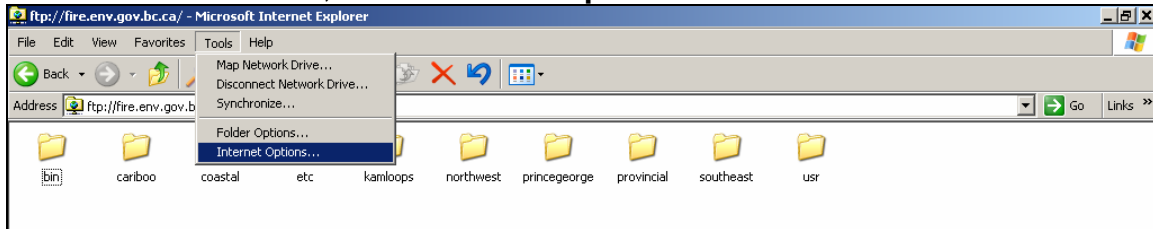
Type in the wildfire ftp site username and password in the appropriate spaces. If you do not have this information, contact the Wildfire FTP Administrator, the Provincial Mapping Support Coordinators or any of the Regional contacts listed in Appendix 1.



## Appendix 4 – Enabling Folder Views for FTP Access

### Enabling ‘folder views’ for FTP Sites within Your Internet Explorer

Under the Tools menu, select **Internet Options**



Select the “**Advanced**” Tab and ensure that the ‘**Enable folder views for FTP sites**’ is checked. If not, check the radio box and select ‘OK’. If this does not give you the ‘Login As...’ option, contact the Wildfire FTP Administrator.

