

Protocols and Contacts for Emergency Wildfire GIS Support

between the

**Ministry of Forests and Range,
Wildfire Management Branch**

and the

**Integrated Land Management Bureau,
GeoBC**

April 2009



Table of Contents

Background.....	3
Requests for ILMB Mapping Support.....	3
<i>Mapping Support for MOFR Fire Management Teams.....</i>	<i>3</i>
<i>Mapping Support for WMB Fire Centre\Zone Offices.....</i>	<i>4</i>
<i>Requests for 'Stand-by' GIS Support.....</i>	<i>4</i>
Wildfire FTP Site.....	4
Wildfire Support Web Site.....	5
Role of ILMB Mapping Coordinators.....	5
Role of Regional Primary Contacts.....	5
Appendix 1 – ILMB Contacts.....	7
Appendix 2 – WMB Contacts.....	8
Appendix 3 – Directions to Access FTP Site.....	9
Appendix 4 – Enabling Folder Views for FTP Access.....	10

Protocols and Contacts for Wildfire GIS Support

Gurdeep Singh

Portfolio Manager, Emergency Management and Public Safety

Per Wallenius

GeoBC Wildfire Preparedness and Deployment Coordinator

1) Background

Since the 2003 Firestorm in British Columbia, the Integrated Land Management Bureau's (ILMB) GeoBC has worked closely with Ministry of Forests and Range (MOFR) Wildfire Protection Branch (WMB) and other emergency response agencies to ensure effective wildfire incident GIS mapping support. Initiatives to improve on inter-agency preparedness, communication, incident data transfer, staff training and endeavours limiting risk characterize the trans-agency contingency planning. Preparedness activities are aligned with contemporary business needs as well as the recommendations that stemmed from the MSRM 2003 Fire Season Report¹ and the Filmon Report (2003)².

This document outlines the information services specific to wildfire emergency response support for the Wildfire Protection Branch the protocols & procedures and contacts.

2) Requests for ILMB Mapping Support

Through a service level agreement (SLA), GeoBC provides GIS service to the WMB for preparedness planning and incident support. GeoBC staff have supported Fire Management Teams in remote locations throughout BC and the Yukon as well as provided office based support for regional Fire Centre and Fire Zone offices.

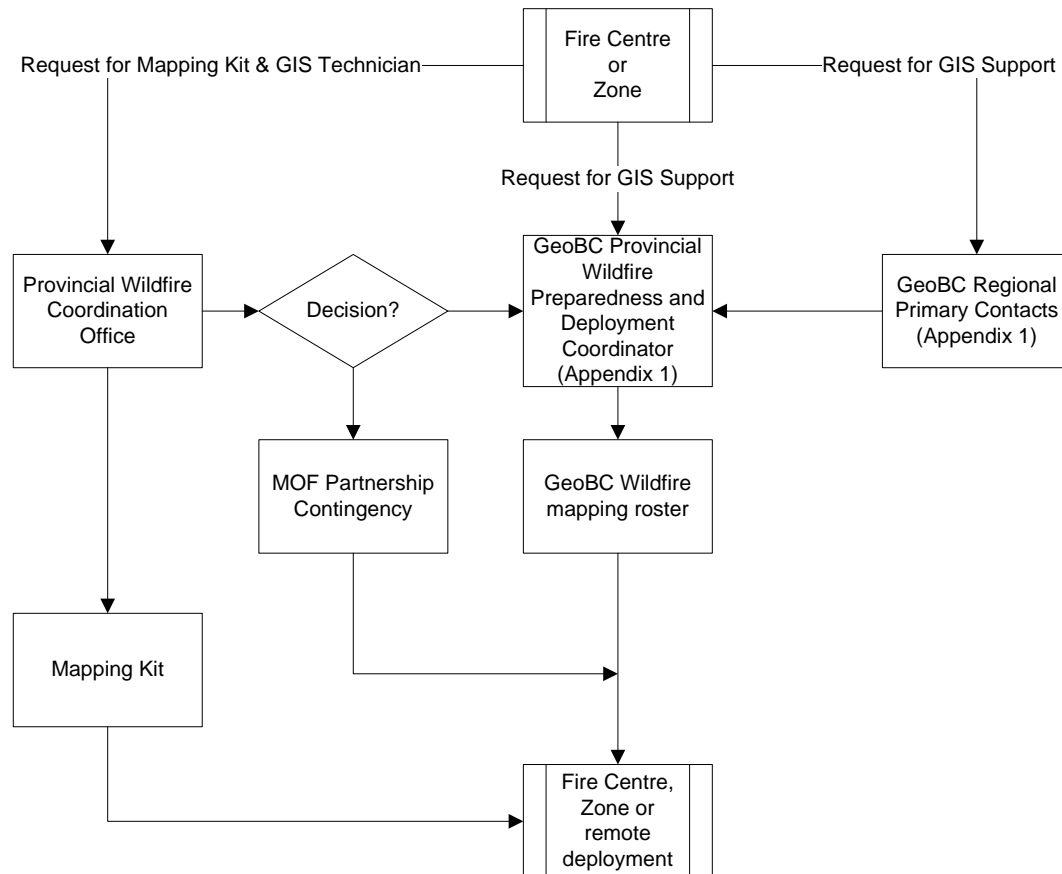
A. Mapping Support for MOFR Fire Management Teams³

Requests for ILMB GIS mapping support should be directed toward the WMB Provincial Mapping Support Dispatcher⁴ who will organize GIS resource requests (i.e. they will call the ILMB dispatcher (Appendix 1) if the ILMB is next on the contingency roster).

B. Mapping Support for WMB Fire Centre\Zone Offices

There are three ways to request Emergency incident GIS assistance for Fire Centres.

- i. Through the Provincial Wildfire Coordination Office (PWCO).
 - Submit resource request to PWCO for both a mapping kit and a GIS Mapping Technician. A mapping kit consists of a GIS Laptop running ArcInfo with the custom Rapid Deployment Mapping Kit (RDMK) extension and external hard drive pre-loaded with required data and ready for stand-alone no network GIS.
 - PWCO will fulfill request by dispatching 1 of 5 mapping kits to the incident.
 - PWCO will fulfill request by contacting GIS Mapping Technicians from available ILMB/GeoBC roster and Contingency List.
- ii. ILMB Provincial Preparedness and Deployment Coordinator or;
 - a. Per Wallenius, per.wallenius@gov.bc.ca, 250-356-0246
- iii. Directly to Regional Primary Contact listed in Appendix 1.



*Regional MOFR Protection Branch contacts are listed in Appendix 2.

C. Requests for 'Stand-by' GIS Support

Requests for stand-by or overtime service can be made through the ILMB Provincial Preparedness and Deployment Coordinator or a Regional Primary Contact (Appendix 1). Requests for weekend stand-by or overtime GIS support should be made before 4 pm Friday.

Protocols governing stand-by and overtime procedures and compensation will be as per Articles 14 and 16 of the BCGEU Collective Agreement. The MOFR-WMB is responsible for all operational, travel and accommodation costs associated with GIS and mapping support, overtime, and standby incurred by GeoBC staff.

3) Wildfire Secure FTP Site

Based on recommendations from the Filman Report² an Interface Wildfire Work Group (PEP⁵, WMB, the OFC⁶ and the ILMB) agreed to exchange incident related operational spatial information and maps in a provincially coordinated and standardized manner. To meet this purpose, a wildfire incident secure FTP site has been created and is managed by GeoBC.

The Wildfire FTP site can be accessed at: <ftp://fire.env.gov.bc.ca>

NOTE: This ftp site is for the exchange of maps and spatial data generated during an emergency incident. It does not contain base data for emergency mapping.

Directions for accessing this site can be found in Appendix 3. The site is password protected. A username and password can be provided. If you require assistance to access files on this FTP site or lose the password, please contact Per Wallenius or a Regional Contact listed in Appendix 1.

This FTP site is maintained from 8:30 am to 4:30 pm Monday to Friday. After hours support can be arranged. Please call Per Wallenius or Carol Ogborne (numbers in Appendix 1) during the business hours listed above.

This site has directories that are organized by WMB Fire Centre that cover geographic regions of British Columbia. Links to maps of these regions are located on our wildfire mapping and information support page under the heading [Locator Maps](#). The URL to the web site is also listed in the next section.

Within each fire centre directory on the wildfire FTP site (e.g. "coastal") has a "**remote_sensing**" directory. This directory is further password protected and intended for secure proprietary data transfer. There are few situations where this directory will be used. Any information required for transfer to PEP or other emergency support agencies will not be stored in the remote_sensing directory but in the main directory for fire centre.

***Standards** for data and maps posted on the wildfire FTP site can be found on the web site.

http://ilmbwww.gov.bc.ca/cis/initiatives/emerg_support/pdf/wrsd_may19_05.pdf.

ILMB staff are not responsible for policing data or map naming standards on the FTP site. If assistance in dispute resolution is required, please contact either the PEP Mapping Support Coordinator or the Wildfire Preparedness and Deployment Coordinator listed in Appendix 1.

4) Wildfire Support Web Site

A public web site has been created to provide ILMB's wildfire mapping support information for the emergency response agencies. The site can be accessed at:

http://ilmbwww.gov.bc.ca/cis/initiatives/emerg_support/index.html

5) Role of ILMB Mapping Support Coordinators

ILMB has designated two coordinator positions, listed in Appendix 1. These roles are provincial in scope and intended to:

- Provincially coordinate requests for emergency mapping and information support should they be necessary
- Resolve emerging mapping and information support issues that require trans-region solutions.
- Maintain deployment roster for ILMB and coordinate deployment to Fire Centres, Zones, and fire camps.

Please do not hesitate to call either of the coordinators with emergency mapping or information support questions or requests.

6) Role of Regional Primary Contacts

ILMB has Regionally based Primary Contacts for each Fire Centre throughout BC. These staff are based in ILMB regional and sub-regional offices that roughly correspond with Fire Centres. These roles are regional in scope and intended to:

- Finding and managing availability (i.e. holidays) of local staff to deploy from the list if you are contacted by Provincial Deployment Coordinator or directly by MOF.
- Contacting Provincial Deployment Coordinator if contacted directly or incidents occur in your fire centre/region.
- Ensuring the regional office has an RDMK enabled laptop or PC with external harddrive identified and ready to deploy if required.

Appendix 1 – ILMB Provincial & Regional Primary Contacts

ILMB Region/Branch	Name	Location	Phone	Mobile
Portfolio Manager, Emergency Management and Public Safety	Gurdeep Singh	Surrey	604-586-4283	604-790-7210
GeoBC (Wildfire Coordinator)	Per Wallenius	Victoria	250-356-0246	250-882-8166
GeoBC (PEP Coordinator)	Carol Ogborne	Victoria	250-356-6998	250-882-9496
NIR	Angela Smith- Rockwell	Prince George	250-565-6171	250-640-0554
SIR	Chris Steeves	Kamloops	250-377-7023	250-320-6202
Kootenays	Marcin Haladaj	Kamloops	250-377-7003	250-318-4624
Skeena	Shawn Reed	Smithers	250-847-7872	250-877-2784
Cariboo	Jennifer Bowman	Williams Lake	250-398-4714	250-305-9962
Coast	Scott Allen	Nanaimo	250-751-3228	250-713-9973

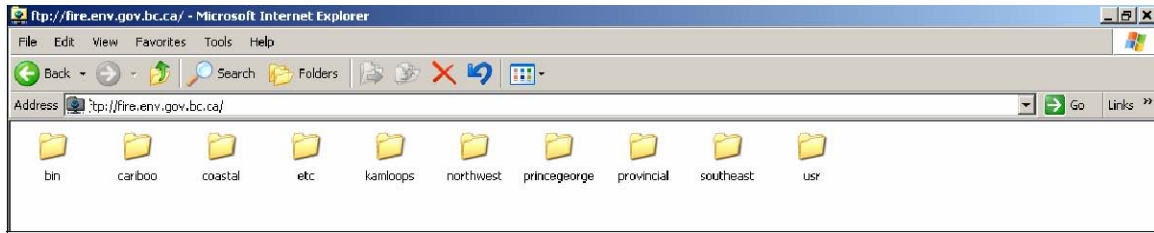
Appendix 2 – WMB Contacts

Fire Centre	Name	Phone	Systems Contact	Phone	Training Coordinators	Phone
Coastal	Matthew Foster	250 951-4215	Matthew Foster	250 951-4215	Tim Neal	
Cariboo	Darren Wilkinson	250-989-2613	Danny Hofman	250 989-2646		
Kamloops	Gerald Smith	250 554-5512	Mike Cottell	250 554-5518	Robert Moore	
Prince George	Kevin Boyer	250 565-6129	Kevin Boyer	250 565-6129	Steve Matlashewski	
Northwest	Terry Regner	250 847-6639	Terry Regner	250 847-6639	Steve Westby	
Southeast	Cy McConnel	250 342-4345	Shawn Anderson	250 365-4057	Rob Beugling	
Victoria Branch Systems	Mike Winder	250 387-8730	n/a	n/a	n/a	n/a
Victoria Branch GIS	Matt Barker	250 356-2025	n/a	n/a	n/a	n/a
Victoria Branch Planning	Ross Wilde	250 387-4316	n/a	n/a	n/a	n/a

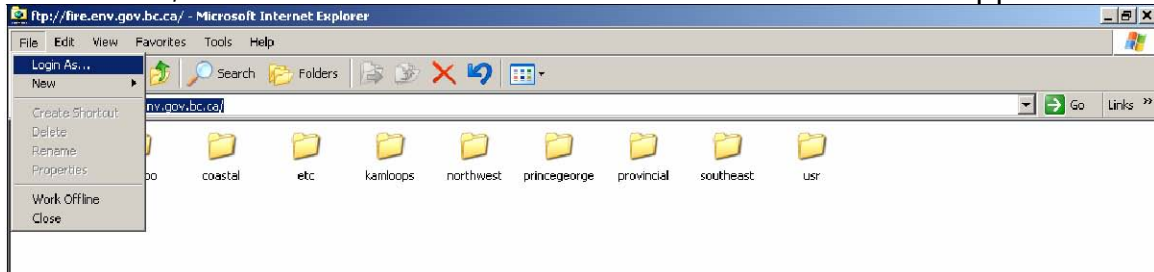
Appendix 3 – Directions to Access Secure Wildfire FTP Site

1) Internet Explorer 6

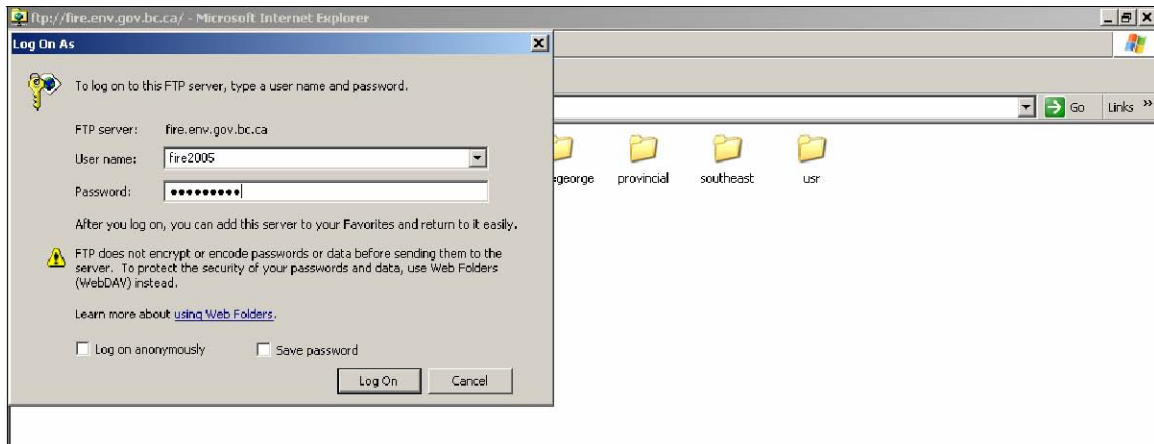
Use the hyperlink <ftp://fire.env.gov.bc.ca> or type this information into the address bar of Internet Explorer. You should see the folders listed below.



Log on to the wildfire ftp site. From the 'File' pull down menu select '**Login As ...**'. If you do not see the '**Login As...**' option, you must enable 'FTP folder view' for FTP sites as shown in Appendix 4. For assistance, contact the Wildfire FTP Administrator listed in Appendix 1.



Type in the wildfire ftp site username and password in the appropriate spaces. If you do not have this information, contact the Wildfire FTP Administrator, the Provincial Mapping Support Coordinators or any of the Regional contacts listed in Appendix 1.



2) Internet Explorer 7

There is no longer a "File | Login as..." option in IE 7. Instead:

- 1) Click the 'Page' menu button on the right-hand side of the IE 7 browser window and select the option, "Open FTP Site in Windows Explorer".
- 2) Then you have to go to "File | Login as...". IE 6 did this step for you. It changed the window from an IE 6 window to a Windows Explorer window. In IE 7, you have to go the extra step.

Alternately start from a new Windows Explorer session:

- 1) Open Windows Explorer:
 - a. Right-click on the Start Menu, and select the "Explore" option.
 - b. On the Keyboard, press and hold the 'Microsoft' key then the 'E' key while 'Microsoft' is still depressed then release both.
- 2) Then, in the address bar, enter the FTP address (i.e. <ftp://fire.env.gov.bc.ca>; don't forget the ftp://, or it won't work!)
- 3) Then use Windows Explorer's "File | Login as..." option to access your site via FTP as you were used to with IE 6.

1 Endnotes

¹ LIBC 2003 Fire Season Report and Recommendations by the MSRM Fire Report Working Group

² Firestorm 2003 Provincial Review by the Honourable Gary Filmon, P.C., O.M.

³ WMB Fire Management Teams respond to complex, large or interface fires

⁴ The Dispatcher is Mike Winder (Appendix 2) as of June 5, 2007

⁵ BC Provincial Emergency Program

⁶ BC Office of the Fire Commissioner